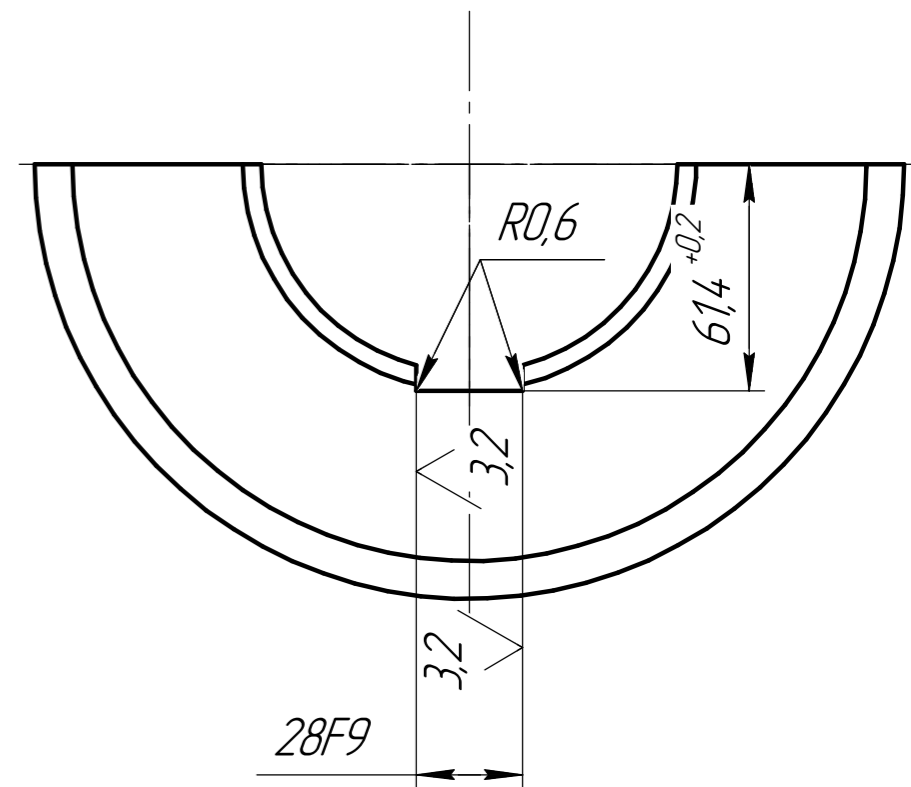


$${}^{3,2}\sqrt{(\vee)}$$


A diagram showing a stepped profile. The left side is a triangle with a horizontal base and a vertical height, with a 45-degree angle indicated between the base and the hypotenuse. The top surface is horizontal and extends to the right, where it meets a vertical step. The right side of the profile is a curved surface.

1. 28...32 HRC<sub>3</sub>.
2. Обработку производить совместно с дет. УПА 60/80.11.03.006.
3. После расточки маркировать попарно.
4. H14, h14,  $\pm \frac{t_2}{2}$ .

Лум.	Маца	Мацымод
	21,9	1:2
Луст	Лустов	